

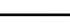




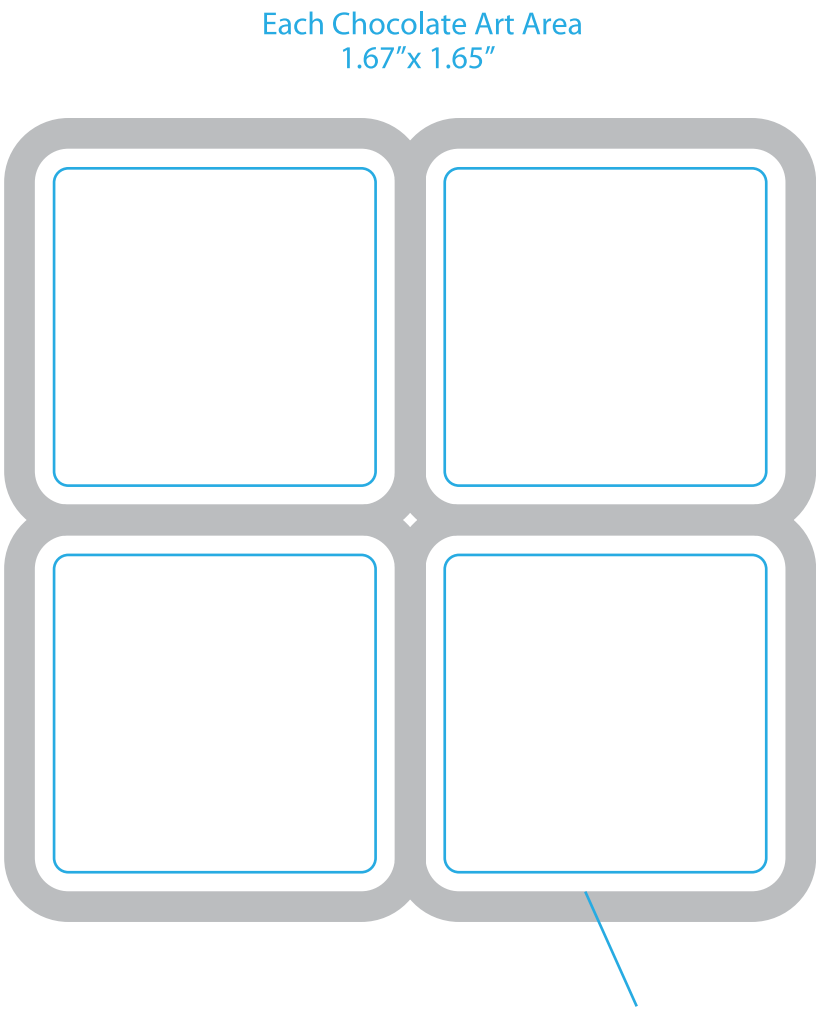
Your background color or design can extend past the **Art Areas** and out to the **Bleed Area**, but *all text and logos must remain inside the Art Area.*

For best results and best print quality:

- Use PMS colors on band whenever possible. We can't color match without them.
- Make sure your images are embedded.
- Vector art works best, but if you are using raster art make sure your raster images are at least 300dpi and are sized in your image editing application to fit the print area(s) in the template.

If you follow these guidelines and your image is clear when viewed at 100% in your image editor, then it is likely to print clear on your final product.

-  = **Glue Area**
-  = **Fold Lines**
-  = **Cut Line**
-  = **Bleed Area**
-  = **Image Area**



Chocolates

4x4 PRINTED SLEEVE






UPCHARGE APPLIES

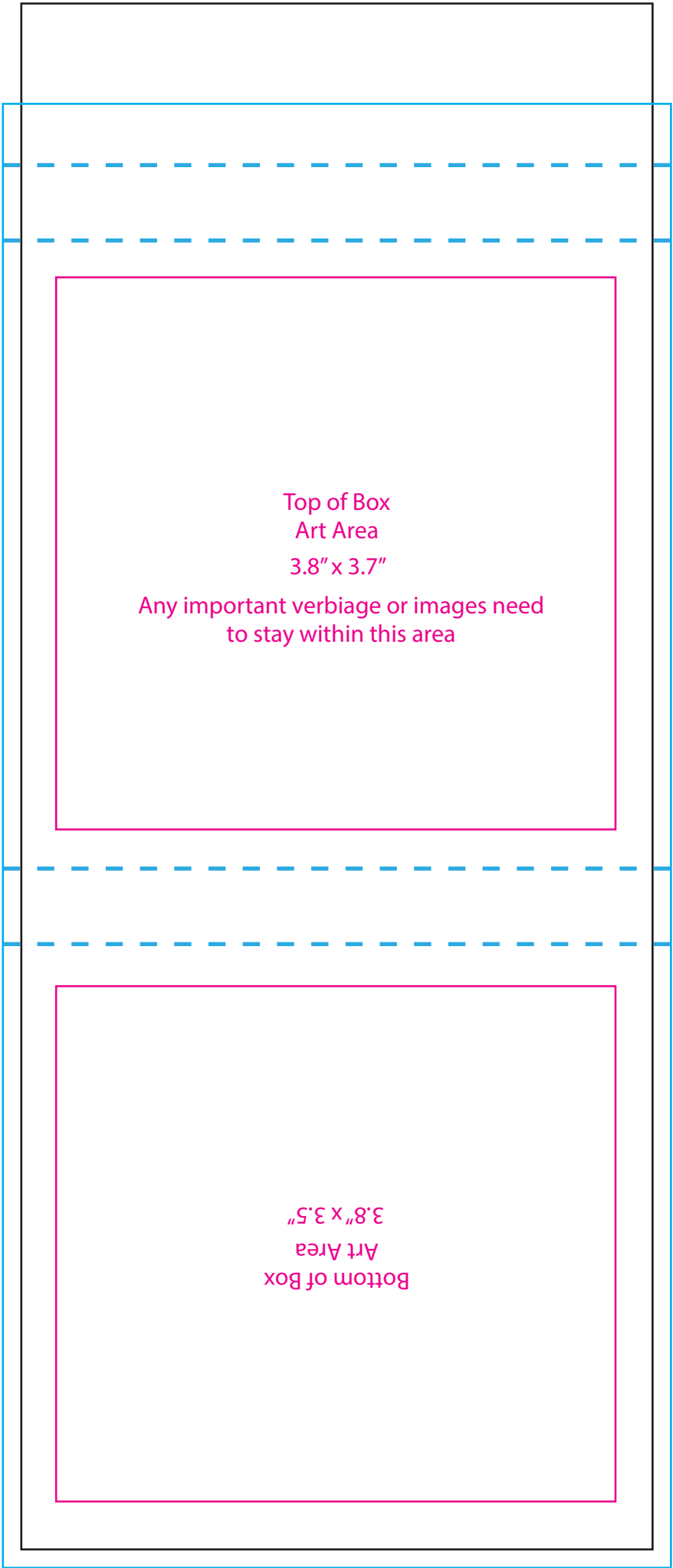
Your background color or design can extend past the **Art Areas** and out to the **Bleed Area**, but *all text and logos must remain inside the **Art Area**.*

For best results and best print quality:

- Use PMS colors whenever possible. We can't color match without them.
- Make sure your images are embedded.
- Vector art works best, but if you are using raster art make sure your raster images are at least 300dpi and are sized in your image editing application to fit the print area(s) in the template.

If you follow these guidelines and your image is clear when viewed at 100% in your image editor, then it is likely to print clear on your final product.

-  = Glue Area
-  = Fold Lines
-  = Cut Line
-  = Bleed Area
-  = Image Area








COMPLIMENTARY
4x4/4x6 STRAIGHT GIFT BAND

Your background color or design can extend past the **Art Areas** and out to the **Bleed Area**, but *all text and logos must remain inside the **Art Area**.*

For best results and best print quality:

- Use PMS colors whenever possible. We can't color match without them.
- Make sure your images are embedded.
- Vector art works best, but if you are using raster art make sure your raster images are at least 300dpi and are sized in your image editing application to fit the print area(s) in the template.

If you follow these guidelines and your image is clear when viewed at 100% in your image editor, then it is likely to print clear on your final product.

-  = Glue Area
-  = Fold Lines
-  = Cut Line
-  = Bleed Area
-  = Image Area

Top Art Area
3" x 4"
Any important verbiage or images
need to stay within pink area

